

Health Services Management and Policy

The Health Services Management and Policy concentration is designed for students with a career interest in health services administration or health policy work. You will gain exposure to a wealth of knowledge and skills that are vital in a variety of organizational settings. The concentration promotes an understanding of public health as practiced alongside a complex health care system and within a changing policy context.



Required Courses

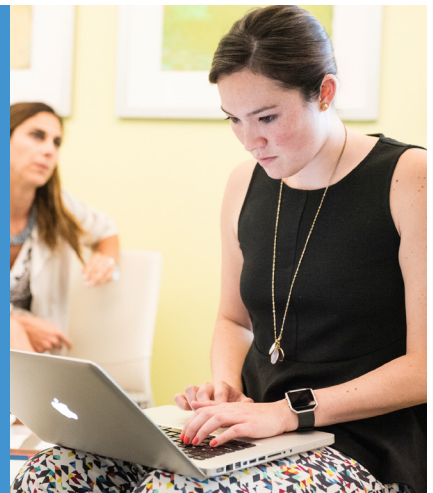
- Public Health Economics
- Law and Health Care or Public Health and Ethics
- The Nuts and Bolts of U.S. Health Care
- Policy Analysis

You will learn to...

- Generate recommendations to inform policy change at the organization, local, state or federal level.
- Employ quantitative and/or qualitative analysis techniques to a health services, management, or policy problem.
- Apply economic theory to health care services and systems.
- Assess the impact of laws, regulations, or cases on public health practice and/or health care delivery and financing.
- Explain the challenges of the organization, financing, and delivery of health care services in the U.S.

Sample Concentration Electives

- Health Services Quality Improvement Methods
- Introduction to a Health Care Governmental Agency
- Pharmacoepidemiology, Bioethics and Reg Policy
- Humanitarian Action in Complex Emergencies
- Maternal & Child Health Policy in the U.S.
- Negotiation & Conflict Resolution
- Consulting in Health Care: Principles and Practice
- Advocacy for Public Health



Sample Applied Learning Experience Projects

- The Rippel Foundation, “Impact of Diversity Among Non-Profit Hospital Board Members on Hospital’s Ability to Improve Community Health and Well-Being”
- Codman Square Health Center, “Addressing the Fragmentation of Medical Care Services and Behavioral Health System in the Adult Services Department at Codman Square Health Center”
- San Francisco Department of Public Health, “Understanding the Local and State Policies Influencing the Food System that Pregnant Women Who are Food Insecure Navigate in the city and county of San Francisco”
- Boston Medical Center, “Quality Assurance and Improvement Project on Perinatal Care and Support at the Boston Center for Refugee Health and Human Rights”
- Tufts University, “Exploring the Health Access Barriers of Formerly Incarcerated People”
- East Boston Neighborhood Health Center, “Development of a Program Management Process for Wellness Initiatives at the EBNHC Student Wellness Center”

Career Paths Examples

Career Services in the Tufts Public Health programs is here to support you for more than just your first post-graduate job. We understand that a public health career can take many paths, and our comprehensive career advising focuses on your long-term development, helping you to expand experience and build credentials for future promotions, career changes, and leadership roles. The following chart gives sample job titles and employers at different stages of a prospective career in Health Services Management and Policy.

Management

Commissioner,
State Public Health Department

Corporate Manager,
Hospital

Department Director,
Consultancy

Program Manager,
State Public Health Department

Project Specialist,
Insurer

Executive

Vice President

Director

Manager

Individual Contributor

Policy

Vice President of Government
Relations, Hospital

Legislative Director,
Elected Official’s Staff

Director of Policy & Government
Relations, Insurer

Health Policy Manager,
Local Public Health Department

Policy Analyst,
Non-profit

Hierarchy of Job Titles