

Institute for Public Health Summer Research Program

Our Summer Research Program is open to students who seek challenge, research and experience in one of three tracks. During this eight-week program, students work with a mentor, engage in research, attend workshops and seminars led by experts, and gain the opportunity to grow academically in a diverse environment.



AGING & NEUROLOGICAL DISEASES

AGING & NEUROLOGICAL DISEASES

Through this track, students learn about three neurological conditions and diseases that often interplay with the aging process: stroke, Parkinson's disease, and dementia. Participants work in research labs and centers focused on these issues.

PUBLIC & GLOBAL HEALTH

PUBLIC & GLOBAL HEALTH

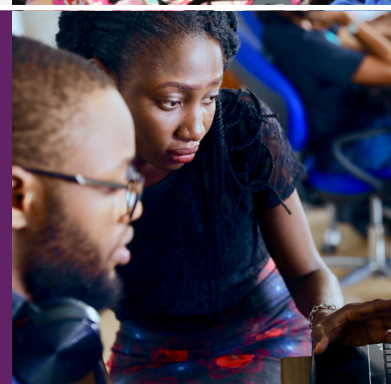
Students gain knowledge, conduct real-world practice and research, receive career counseling and build a network of colleagues while collaborating with public health, global health and pediatric faculty, St. Louis community professionals, and each other.



CARDIOVASCULAR DISEASE & HEMATOLOGY

Students in our new SummeR reseArch DIversity ProgrAm iN Cardiovascular Disease & HEmatology (RADIANCE) track learn about the broad scope of heart and blood disorders and their interdisciplinary and multidimensional impact.

RADIANCE



Apply today: publichealth.wustl.edu/summer

Application period: October 14, 2022-January 13, 2023 | Program period: June & July 2023



Washington University in St. Louis

INSTITUTE FOR PUBLIC HEALTH

The Summer Research Program is supported by the Institute for Public Health and its Global Health Center and Friedman Center for Aging; the Children's Discovery Institute of Washington University and St. Louis Children's Hospital; the National Institute on Neurological Disorders and Stroke, National Institutes of Health; and the National Health, Lung and Blood Institute.

Institute for Public Health Summer Research Program

AGING & NEUROLOGICAL DISEASES



Through this track offered by the Harvey A. Friedman Center for Aging, students learn about three neurological conditions and diseases that often interplay with the aging process — stroke, Parkinson's disease, and dementia.



WORK WITH TOP INVESTIGATORS

Get matched with a faculty mentor and attend weekly workshops



BUILD A NETWORK

Build a social network with student peers, faculty and staff



GAIN REAL-WORLD EXPERIENCE

Work in research labs and centers focused on aging and neurological disease

ELIGIBILITY

- Open to students who are working on an undergraduate degree at the time of our summer program (must have completed at least two semesters)
- Due to grant restrictions, we are unable to fund students who are not U.S. citizens or permanent residents
- Students with backgrounds and experiences traditionally underrepresented among researchers are strongly encouraged to apply

Apply today: publichealth.wustl.edu/summer

Application period: October 14, 2022-January 13, 2023 | Program period: June 1-July 28, 2023

Accepted students receive pay. Non-WashU students Metrolink transit pass.



Washington University in St. Louis

INSTITUTE FOR PUBLIC HEALTH

This program is supported by a grant from the National Institute on Neurological Disorders and Stroke via the NIH Summer Research Education Experience Programs funding opportunity (PI: Carpenter, 1R25NS100133-01A1).

Contact us: centerforaging@wustl.edu

Institute for Public Health Summer Research Program

PUBLIC & GLOBAL HEALTH



Students enrolled in this track gain knowledge, conduct real-world practice and research, receive career counseling, and build a network by collaborating with public health, global health and pediatric faculty, St. Louis community professionals, and each other.



LEARN FROM EXPERTS

Attend seminars, workshops and sessions on diverse topics in public health, global health and pediatrics



PRESENT YOUR WORK

Present to your peers and mentors at an end-of-program symposium



GAIN REAL-WORLD EXPERIENCE

Collaborate on research projects with a faculty mentor in a lab or field-based setting

ELIGIBILITY

- Open to national and international students who are full-time college undergraduates, graduate students, or medical students at a U.S.-based university
- Students with a robust interest in public health, global health or pediatric research; those who can demonstrate overcoming substantial educational, cultural or economic obstacles; first generation college students; and veterans are encouraged to apply

Apply today: publichealth.wustl.edu/summer

Application period: October 14, 2022-January 13, 2023 | Program period: June 1-July 31, 2023

Accepted students receive a stipend.

Non-WashU students receive a Metrolink transit pass.



Washington University in St. Louis

INSTITUTE FOR PUBLIC HEALTH

This program is supported by the Institute for Public Health and its Global Health Center and the Children's Discovery Institute of Washington University and St. Louis Children's Hospital.

Contact us: iphsummer@wustl.edu

Institute for Public Health Summer Research Program

CARDIOVASCULAR DISEASE & HEMATOLOGY



Students in our *new* SummeR reseArch DIversity ProgrAm iN Cardiovascular Disease & HEmatology (RADIANCE) track learn about the broad scope of heart and blood disorders and their interdisciplinary and multidimensional impact.



LEARN FROM EXPERTS

Engage in lectures and group discussions about clinical trials, research ethics, and more



GAIN REAL-WORLD EXPERIENCE

Work alongside a mentor in a lab setting



PRESENT YOUR WORK

Give a capstone presentation during your final week of the program

ELIGIBILITY

- Must meet one or more of the following categories:
 - racial and ethnic groups who are underrepresented in health-related sciences on a national basis*
 - individuals with disabilities
 - individuals from disadvantaged backgrounds
- Must be an undergraduate or health professional student actively enrolled in an accredited university or accredited health professional school

**Including Black or African American, Hispanic or Latino, American Indian or Alaska Native, Native Hawaiian and other Pacific Islander. For more information on qualifications visit bit.ly/3gpXh4E.*

Apply today: publichealth.wustl.edu/summer

Application period opens: October 14, 2022 | Program period: June 5-July 28, 2023

Accepted students receive a stipend and, if needed, support for travel to and from St. Louis and lodging while enrolled.
Non-WashU students receive a Metrolink transit pass.



Washington University in St. Louis

INSTITUTE FOR PUBLIC HEALTH

This program is supported by the National Heart, Lung, and Blood Institute (NHLBI).

Contact us: radiance@wustl.edu